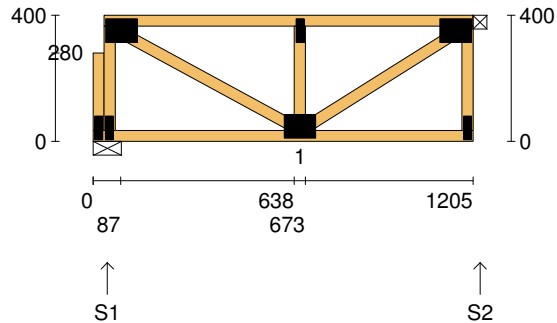


| | | |
|---|---|--|
| Client: D'ANDREA | Trusstech SA Pty Ltd 16 High St., Dry Creek, SA 5094 Joist Name: FT1 Type: SJ 400 Joists: FT1, FT2, FT27, FT28 | Job No: TT09727 |
| Site: 541 ANZAC HWY GLENELG EAST SA 5045 AUS | | Weight: 8.12 kg |
| Ref: DWELLING 1 | | Total Weight: 32.48 kg Laminations: 1 |



TIMBER / PLATES


| Member | Size | Plating | Restraint |
|---------|--------------------|---------|-----------|
| BC1 | 90x35-MGP10 H0 ADS | JD5 | 600 |
| LBlock1 | 90x35-MGP10 H0 ADS | JD5 | |
| LEW1 | 90x35-MGP10 H0 ADS | JD5 | |
| TC1 | 90x35-MGP10 H0 ADS | JD5 | 300 |
| W1 | 90x35-MGP10 H0 ADS | JD5 | |
| W2 | 90x35-MGP10 H0 ADS | JD5 | |
| W3 | 90x35-MGP10 H0 ADS | JD5 | |
| REW1 | 90x35-MGP10 H0 ADS | JD5 | |

Vertical Reactions at Supports

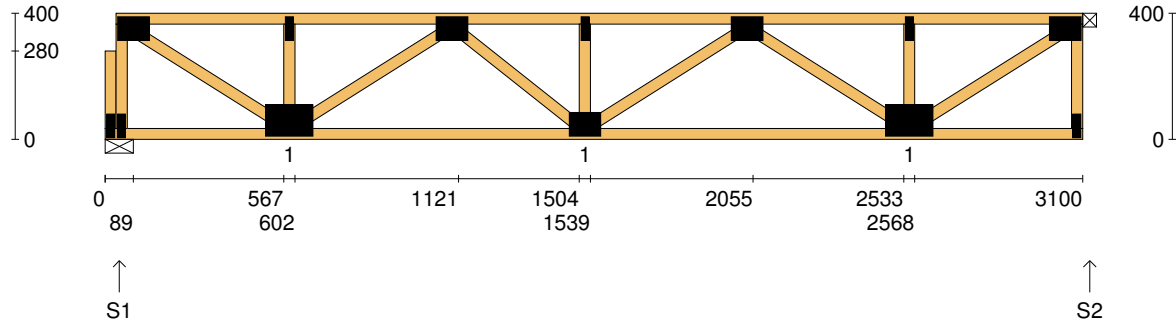
| | S1 | S2 |
|--------------------|------|------|
| 1.35DL (kN) | 0.20 | 0.19 |
| 1.2DL + 1.5LL (kN) | 0.94 | 0.94 |

Joint Nail Plate

| | |
|-------|-----------|
| BL1-1 | 25x75-MN |
| T1 | 75x100-MN |
| BL1 | 25x75-MN |
| B1 | 75x100-MN |
| T2 | 25x75-MN |
| BR1 | 25x75-MN |
| T3 | 75x100-MN |

| | | | | | |
|----------------------|---|-----------------------------------|--|---|--|
| Span: 1205 | Floor Material: Particle (15.4 kg/m²) | Application: General Areas | All dimensions in millimetres. This drawing should be read in conjunction with Multinail Technical sheets. Wall plates must be placed at supports only. | Marc Houldsworth (TN-016-020) | |
| Overhang: 0/0 | Floor Covering: Std Carpet + Underlay (8 kg/m²) | Live Load: 1.5 kPa | | Ver: Floor 1.9.3 | |
| Spacing: 600 | Ceiling Material: Plaster 10mm Supa Span (8.2 kg/m²) | Point Load: 1.8 kN |  | Date: 28/05/2018 | |
| Quantity: 4 | Ceiling Fixing: Metal direct @ 600c | Design: AS 1720.1-2010 | | Page: 1 of 18 | |

| | | |
|---|--|-------------------------------|
| Client: D'ANDREA | Trusstech SA Pty Ltd 16 High St., Dry Creek, SA 5094 | Job No: TT09727 |
| Site: 541 ANZAC HWY GLENELG EAST SA 5045 AUS | | Weight: 19.34 kg |
| Ref: DWELLING 1 | Joist Name: FT2 Type: SJ 400 Joists: FT4, FT17, FT19, FT36 | Total Weight: 77.34 kg |
| | | Laminations: 1 |



TIMBER / PLATES

| Member | Size | Plating | Restraint |
|---------|--------------------|---------|-----------|
| BC1 | 90x35-MGP10 H0 ADS | JD5 | 600 |
| LBlock1 | 90x35-MGP10 H0 ADS | JD5 | |
| LEW1 | 90x35-MGP10 H0 ADS | JD5 | |
| TC1 | 90x35-MGP10 H0 ADS | JD5 | 300 |
| W1 | 90x35-MGP10 H0 ADS | JD5 | |
| W2 | 90x35-MGP10 H0 ADS | JD5 | |
| W3 | 90x35-MGP10 H0 ADS | JD5 | |
| W4 | 90x35-MGP10 H0 ADS | JD5 | |
| W5 | 90x35-MGP10 H0 ADS | JD5 | |
| W6 | 90x35-MGP10 H0 ADS | JD5 | |
| W7 | 90x35-MGP10 H0 ADS | JD5 | |
| W8 | 90x35-MGP10 H0 ADS | JD5 | |
| W9 | 90x35-MGP10 H0 ADS | JD5 | |


- 1 more member was not shown -

Vertical Reactions at Supports

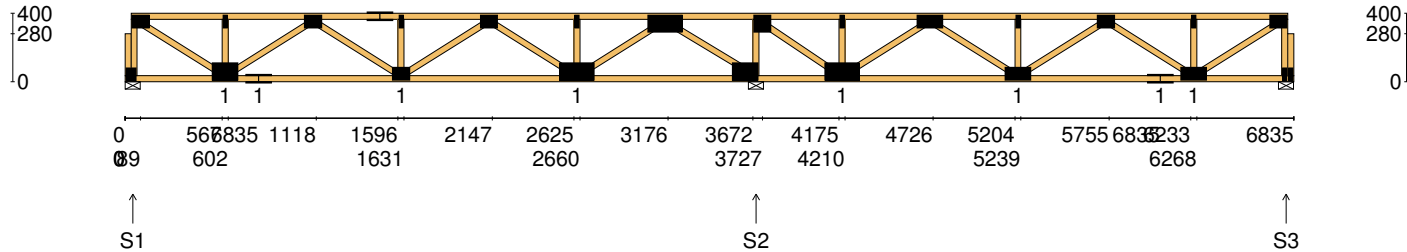
| | S1 | S2 |
|--------------------|------|------|
| 1.35DL (kN) | 0.51 | 0.50 |
| 1.2DL + 1.5LL (kN) | 2.50 | 2.49 |

Joint Nail Plate

| | |
|-------|------------|
| BL1-1 | 25x75-MN |
| T1 | 75x100-MN |
| BL1 | 25x75-MN |
| B1 | 100x150-MN |
| T2 | 25x75-MN |
| T3 | 75x100-MN |
| B2 | 75x100-MN |
| T4 | 25x75-MN |
| T5 | 75x100-MN |
| B3 | 100x150-MN |
| T6 | 25x75-MN |
| BR1 | 25x75-MN |
| T7 | 75x100-MN |

| | | | | | |
|----------------------|---|-----------------------------------|--|---|--------------------|
| Span: 3100 | Floor Material: Particle (15.4 kg/m²) | Application: General Areas | All dimensions in millimetres. This drawing should be read in conjunction with Multinail Technical sheets. Wall plates must be placed at supports only. | Marc Houldsworth (TN-016-020) | |
| Overhang: 0/0 | Floor Covering: Std Carpet + Underlay (8 kg/m²) | Live Load: 1.5 kPa | | Ver: | Floor 1.9.3 |
| Spacing: 600 | Ceiling Material: Plaster 10mm Supa Span (8.2 kg/m²) | Point Load: 1.8 kN |  | Date: | 28/05/2018 |
| Quantity: 4 | Ceiling Fixing: Metal direct @ 600c | Design: AS 1720.1-2010 | | Page: | 2 of 18 |

| | | |
|---|--|-------------------------------|
| Client: D'ANDREA | Trusstech SA Pty Ltd 16 High St., Dry Creek, SA 5094 | Job No: TT09727 |
| Site: 541 ANZAC HWY GLENELG EAST SA 5045 AUS | | Weight: 42.52 kg |
| Ref: DWELLING 1 | Joist Name: FT3 Type: SJ 400 Joists: FT6 | Total Weight: 42.52 kg |
| | | Laminations: 1 |



TIMBER / PLATES

| Member | Size | Plating | Restraint |
|---------|--------------------|---------|-----------|
| BC1 | 90x35-MGP10 H0 ADS | JD5 | 600 |
| LBlock1 | 90x35-MGP10 H0 ADS | JD5 | |
| LEW1 | 90x35-MGP10 H0 ADS | JD5 | |
| TC1 | 90x35-MGP10 H0 ADS | JD5 | 300 |
| W1 | 90x35-MGP10 H0 ADS | JD5 | |
| W2 | 90x35-MGP10 H0 ADS | JD5 | |
| W3 | 90x35-MGP10 H0 ADS | JD5 | |
| BC2 | 90x35-MGP10 H0 ADS | JD5 | 600 |
| W4 | 90x35-MGP10 H0 ADS | JD5 | |
| TC2 | 90x35-MGP10 H0 ADS | JD5 | 300 |
| W5 | 90x35-MGP10 H0 ADS | JD5 | |
| W6 | 90x35-MGP10 H0 ADS | JD5 | |
| W7 | 90x35-MGP10 H0 ADS | JD5 | |


- 16 more members were not shown -

Vertical Reactions at Supports

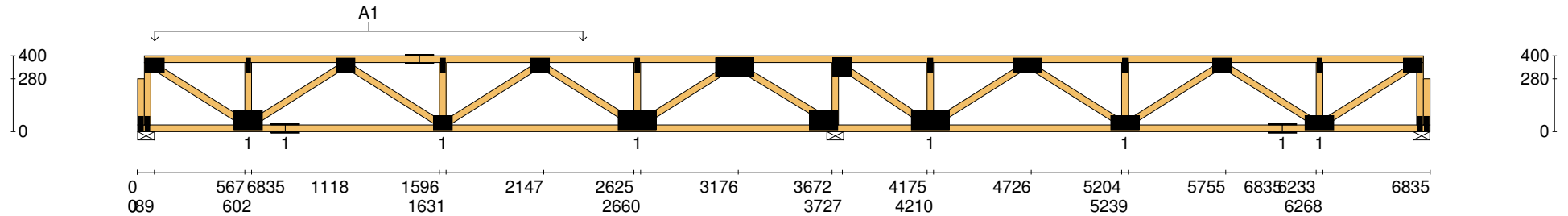
| | S1 | S2 | S3 |
|--------------------|------|------|------|
| 1.35DL (kN) | 0.71 | 1.54 | 0.35 |
| 1.2DL + 1.5LL (kN) | 2.58 | 6.99 | 1.81 |

| Joint | Nail Plate | Joint | Nail Plate |
|-------|------------|-------|------------|
| BL1-1 | 25x75-MN | T8 | 100x200-MN |
| T1 | 75x100-MN | B5 | 100x150-MN |
| BL1 | 25x75-MN | T9 | 100x100-MN |
| B1 | 100x150-MN | B6 | 100x200-MN |
| T2 | 25x75-MN | T10 | 25x75-MN |
| B2 | 75x150-MN | T11 | 75x150-MN |
| T3 | 75x100-MN | B7 | 75x150-MN |
| T4 | 75x150-MN | T12 | 25x75-MN |
| B3 | 75x100-MN | T13 | 75x100-MN |
| T5 | 25x75-MN | B8 | 75x150-MN |
| T6 | 75x100-MN | B9 | 75x150-MN |
| B4 | 100x200-MN | T14 | 25x75-MN |
| T7 | 25x75-MN | BR1-1 | 25x75-MN |


- 2 more nail plates were not shown -

| | | | | | |
|----------------------|---|-----------------------------------|--|---|--|
| Span: 6835 | Floor Material: Particle (15.4 kg/m²) | Application: General Areas | All dimensions in millimetres. This drawing should be read in conjunction with Multinail Technical sheets. Wall plates must be placed at supports only. | Marc Houldsworth (TN-016-020) | |
| Overhang: 0/0 | Floor Covering: Std Carpet + Underlay (8 kg/m²) | Live Load: 1.5 kPa | | Ver: Floor 1.9.3 | |
| Spacing: 600 | Ceiling Material: Plaster 10mm Supa Span (8.2 kg/m²) | Point Load: 1.8 kN |  | Date: 28/05/2018 | |
| Quantity: 1 | Ceiling Fixing: Metal direct @ 600c | Design: AS 1720.1-2010 | | Page: 3 of 18 | |

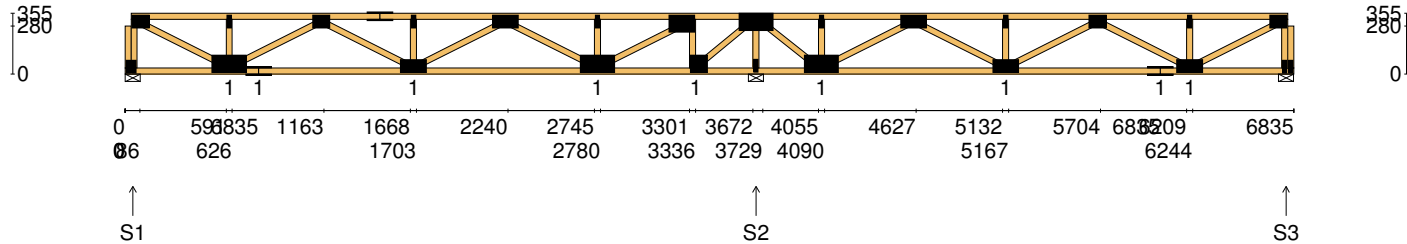
| | | |
|---|--|-------------------------------|
| Client: D'ANDREA | Trusstech SA Pty Ltd 16 High St., Dry Creek, SA 5094 | Job No: TT09727 |
| Site: 541 ANZAC HWY GLENELG EAST SA 5045 AUS | | Weight: 42.52 kg |
| Ref: DWELLING 1 | Joist Name: FT3 Type: SJ 400 Joists: FT6 | Total Weight: 42.52 kg |
| | | Laminations: 1 |



| | |
|-----------------------|-------------------------------|
| User Def. Load | A1 43.50 kg/m ² |
| Applied Load | |
| DL (kN) | |
| LL (kN) | |
| WL Up (kN) | |
| WL Dn (kN) | |

| | | | | |
|----------------------|--|-----------------------------------|--|---|
| Span: 6835 | Floor Material: Particle (15.4 kg/m²) | Application: General Areas | All dimensions in millimetres. This drawing should be read in conjunction with Multinail Technical sheets. Wall plates must be placed at supports only. | Marc Houldsworth (TN-016-020) |
| Overhang: 0/0 | Floor Covering: Std Carpet + Underlay (8 kg/m²) | Live Load: 1.5 kPa | | Ver: Floor 1.9.3 |
| Spacing: 600 | Ceiling Material: Plaster 10mm Supa Span (8.2 kg/m²) | Point Load: 1.8 kN |  | Date: 28/05/2018 |
| Quantity: 1 | Ceiling Fixing: Metal direct @ 600c | Design: AS 1720.1-2010 | | Page: 4 of 18 |

| | | |
|---|--|--------------------------------|
| Client: D'ANDREA | Trusstech SA Pty Ltd 16 High St., Dry Creek, SA 5094 | Job No: TT09727 |
| Site: 541 ANZAC HWY GLENELG EAST SA 5045 AUS | | Weight: 42.09 kg |
| Ref: DWELLING 1 | Joist Name: FT4 Type: SJ 355 Joists: FT7, FT8, FT9, FT21 | Total Weight: 168.37 kg |
| | | Laminations: 1 |



TIMBER / PLATES

| Member | Size | Plating | Restraint |
|---------|--------------------|---------|-----------|
| BC1 | 90x35-MGP10 H0 ADS | JD5 | 600 |
| LBlock1 | 90x35-MGP10 H0 ADS | JD5 | |
| LEW1 | 90x35-MGP10 H0 ADS | JD5 | |
| TC1 | 90x35-MGP10 H0 ADS | JD5 | 300 |
| W1 | 90x35-MGP10 H0 ADS | JD5 | |
| W2 | 90x35-MGP10 H0 ADS | JD5 | |
| W3 | 90x35-MGP10 H0 ADS | JD5 | |
| BC2 | 90x35-MGP10 H0 ADS | JD5 | 600 |
| W4 | 90x35-MGP10 H0 ADS | JD5 | |
| TC2 | 90x35-MGP10 H0 ADS | JD5 | 300 |
| W5 | 90x35-MGP10 H0 ADS | JD5 | |
| W6 | 90x35-MGP10 H0 ADS | JD5 | |
| W7 | 90x35-MGP10 H0 ADS | JD5 | |


- 17 more members were not shown -

Vertical Reactions at Supports

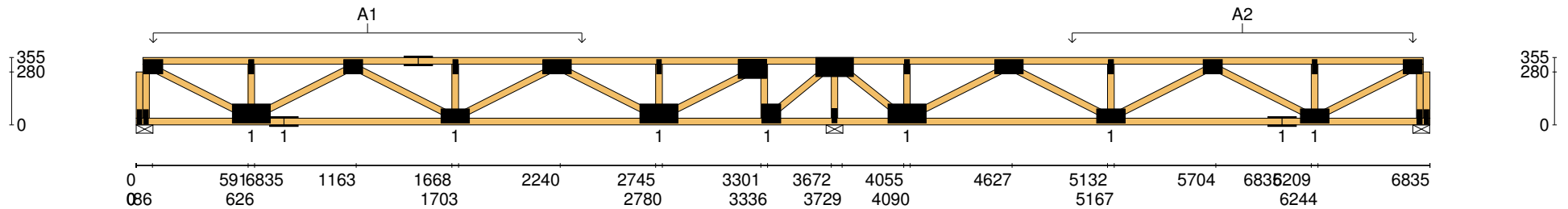
| | S1 | S2 | S3 |
|--------------------|------|------|------|
| 1.35DL (kN) | 0.69 | 1.65 | 0.53 |
| 1.2DL + 1.5LL (kN) | 2.57 | 7.10 | 1.97 |


| Joint | Nail Plate | Joint | Nail Plate |
|-------|------------|-------|------------|
| BL1-1 | 25x75-MN | T8 | 100x150-MN |
| T1 | 75x100-MN | B5 | 100x100-MN |
| BL1 | 25x75-MN | T9 | 100x200-MN |
| B1 | 100x200-MN | B6 | 25x75-MN |
| T2 | 25x75-MN | B7 | 100x200-MN |
| B2 | 75x150-MN | T10 | 25x75-MN |
| T3 | 75x100-MN | T11 | 75x150-MN |
| T4 | 75x150-MN | B8 | 75x150-MN |
| B3 | 75x150-MN | T12 | 25x75-MN |
| T5 | 25x75-MN | T13 | 75x100-MN |
| T6 | 75x150-MN | B9 | 75x150-MN |
| B4 | 100x200-MN | B10 | 75x150-MN |
| T7 | 25x75-MN | BR1-1 | 25x75-MN |

- 3 more nail plates were not shown -

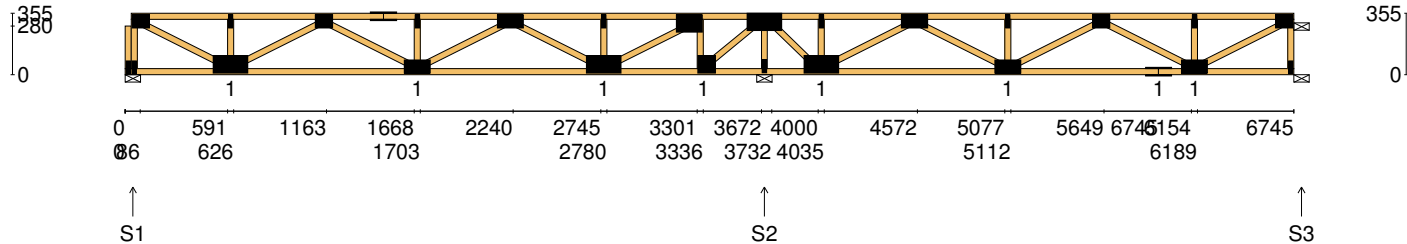
| | | | | |
|----------------------|--|-----------------------------------|--|---|
| Span: 6835 | Floor Material: Particle (15.4 kg/m²) | Application: General Areas | All dimensions in millimetres. This drawing should be read in conjunction with Multinail Technical sheets. Wall plates must be placed at supports only. | Marc Houldsworth (TN-016-020) |
| Overhang: 0/0 | Floor Covering: Std Carpet + Underlay (8 kg/m²) | Live Load: 1.5 kPa | | Ver: Floor 1.9.3 |
| Spacing: 600 | Ceiling Material: Plaster 10mm Supa Span (8.2 kg/m²) | Point Load: 1.8 kN |  | Date: 28/05/2018 |
| Quantity: 4 | Ceiling Fixing: Metal direct @ 600c | Design: AS 1720.1-2010 | | Page: 5 of 18 |

| | | |
|---|--|---|
| Client: D'ANDREA | Trusstech SA Pty Ltd 16 High St., Dry Creek, SA 5094 Joist Name: FT4 Type: SJ 355 Joists: FT7, FT8, FT9, FT21 | Job No: TT09727 |
| Site: 541 ANZAC HWY GLENELG EAST SA 5045 AUS | | Weight: 42.09 kg |
| Ref: DWELLING 1 | | Total Weight: 168.37 kg Laminations: 1 |



| | | | |
|---|------|-------------------------|---|
| User Def. Load | | A1 | A2 |
| | | 43.50 kg/m ² | 43.50 kg/m ² |
| Applied Load | | | |
| DL | (kN) | | |
| LL | (kN) | | |
| WL Up | (kN) | | |
| WL Dn | (kN) | | |
| Span: | 6835 | Floor Material: | Particle (15.4 kg/m ²) |
| Overhang: | 0/0 | Floor Covering: | Std Carpet + Underlay (8 kg/m ²) |
| Spacing: | 600 | Ceiling Material: | Plaster 10mm Supa Span (8.2 kg/m ²) |
| Quantity: | 4 | Ceiling Fixing: | Metal direct @ 600c |
| | | Application: | General Areas |
| | | Live Load: | 1.5 kPa |
| | | Point Load: | 1.8 kN |
| | | Design: | AS 1720.1-2010 |
| All dimensions in millimetres. This drawing should be read in conjunction with Multinail Technical sheets. Wall plates must be placed at supports only. | | | |
|  | | | |
| | | | |
| | | | |
| | | | Marc Houldsworth (TN-016-020) |
| | | | Ver: Floor 1.9.3 |
| | | | Date: 28/05/2018 |
| | | | Page: 6 of 18 |

| | | |
|---|--|-------------------------------|
| Client: D'ANDREA | Trusstech SA Pty Ltd 16 High St., Dry Creek, SA 5094 | Job No: TT09727 |
| Site: 541 ANZAC HWY GLENELG EAST SA 5045 AUS | | Weight: 41.18 kg |
| Ref: DWELLING 1 | Joist Name: FT5 Type: SJ 355 Joists: FT10 | Total Weight: 41.18 kg |
| | | Laminations: 1 |



TIMBER / PLATES

| Member | Size | Plating | Restraint |
|---------|--------------------|---------|-----------|
| BC1 | 90x35-MGP10 H0 ADS | JD5 | 600 |
| LBlock1 | 90x35-MGP10 H0 ADS | JD5 | |
| LEW1 | 90x35-MGP10 H0 ADS | JD5 | |
| TC1 | 90x35-MGP10 H0 ADS | JD5 | 300 |
| W1 | 90x35-MGP10 H0 ADS | JD5 | |
| W2 | 90x35-MGP10 H0 ADS | JD5 | |
| W3 | 90x35-MGP10 H0 ADS | JD5 | |
| W4 | 90x35-MGP10 H0 ADS | JD5 | |
| TC2 | 90x35-MGP10 H0 ADS | JD5 | 300 |
| W5 | 90x35-MGP10 H0 ADS | JD5 | |
| W6 | 90x35-MGP10 H0 ADS | JD5 | |
| W7 | 90x35-MGP10 H0 ADS | JD5 | |
| W8 | 90x35-MGP10 H0 ADS | JD5 | |


- 15 more members were not shown -

Vertical Reactions at Supports

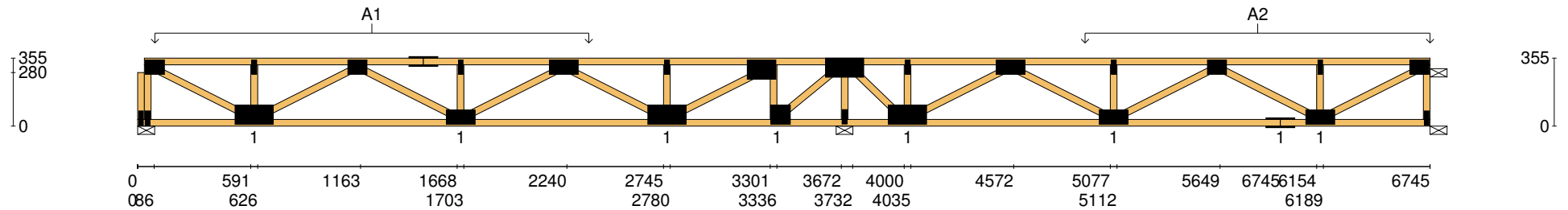
| | S1 | S2 | S3 |
|--------------------|------|------|------|
| 1.35DL (kN) | 0.69 | 1.64 | 0.52 |
| 1.2DL + 1.5LL (kN) | 2.58 | 7.05 | 1.92 |


| Joint | Nail Plate | Joint | Nail Plate |
|-------|------------|-------|------------|
| BL1-1 | 25x75-MN | B4 | 100x100-MN |
| T1 | 75x100-MN | T9 | 100x200-MN |
| BL1 | 25x75-MN | B5 | 25x75-MN |
| B1 | 100x200-MN | B6 | 100x200-MN |
| T2 | 25x75-MN | T10 | 25x75-MN |
| T3 | 75x100-MN | T11 | 75x150-MN |
| T4 | 75x150-MN | B7 | 75x150-MN |
| B2 | 75x150-MN | T12 | 25x75-MN |
| T5 | 25x75-MN | T13 | 75x100-MN |
| T6 | 75x150-MN | B8 | 75x150-MN |
| B3 | 100x200-MN | B9 | 75x150-MN |
| T7 | 25x75-MN | T14 | 25x75-MN |
| T8 | 100x150-MN | T15 | 75x100-MN |

- 1 more nail plate was not shown -

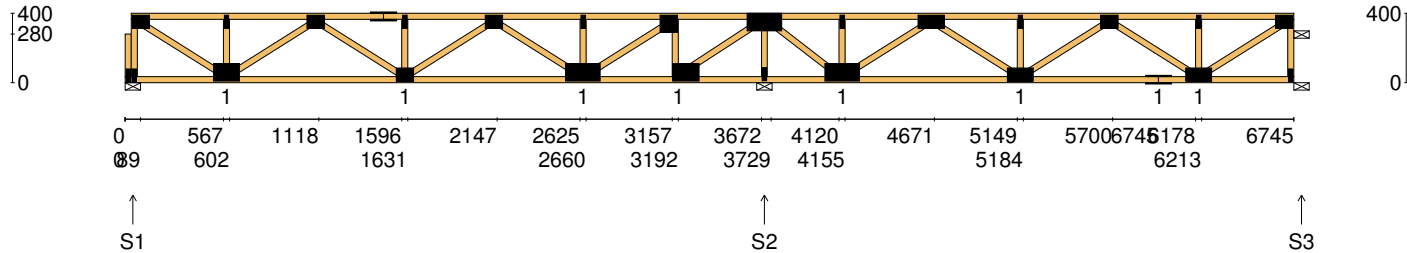
| | | | | | |
|----------------------|---|-----------------------------------|--|---|--|
| Span: 6745 | Floor Material: Particle (15.4 kg/m²) | Application: General Areas | All dimensions in millimetres. This drawing should be read in conjunction with Multinail Technical sheets. Wall plates must be placed at supports only. | Marc Houldsworth (TN-016-020) | |
| Overhang: 0/0 | Floor Covering: Std Carpet + Underlay (8 kg/m²) | Live Load: 1.5 kPa | | Ver: Floor 1.9.3 | |
| Spacing: 600 | Ceiling Material: Plaster 10mm Supa Span (8.2 kg/m²) | Point Load: 1.8 kN |  | Date: 28/05/2018 | |
| Quantity: 1 | Ceiling Fixing: Metal direct @ 600c | Design: AS 1720.1-2010 | | Page: 7 of 18 | |

| | | |
|---|--|-------------------------------|
| Client: D'ANDREA | Trusstech SA Pty Ltd 16 High St., Dry Creek, SA 5094 | Job No: TT09727 |
| Site: 541 ANZAC HWY GLENELG EAST SA 5045 AUS | | Weight: 41.18 kg |
| Ref: DWELLING 1 | Joist Name: FT5 Type: SJ 355 Joists: FT10 | Total Weight: 41.18 kg |
| | | Laminations: 1 |



| | | | |
|---|------|-------------------------|---|
| User Def. Load | | A1 | A2 |
| | | 43.50 kg/m ² | 43.50 kg/m ² |
| Applied Load | | | |
| DL | (kN) | | |
| LL | (kN) | | |
| WL Up | (kN) | | |
| WL Dn | (kN) | | |
| Span: | 6745 | Floor Material: | Particle (15.4 kg/m ²) |
| Overhang: | 0/0 | Floor Covering: | Std Carpet + Underlay (8 kg/m ²) |
| Spacing: | 600 | Ceiling Material: | Plaster 10mm Supa Span (8.2 kg/m ²) |
| Quantity: | 1 | Ceiling Fixing: | Metal direct @ 600c |
| | | Application: | General Areas |
| | | Live Load: | 1.5 kPa |
| | | Point Load: | 1.8 kN |
| | | Design: | AS 1720.1-2010 |
| All dimensions in millimetres. This drawing should be read in conjunction with Multinail Technical sheets. Wall plates must be placed at supports only. | | | |
|  | | | |
| | | | |
| | | | |
| | | | Marc Houldsworth (TN-016-020) |
| | | | Ver: Floor 1.9.3 |
| | | | Date: 28/05/2018 |
| | | | Page: 8 of 18 |

| | | |
|---|--|-------------------------------|
| Client: D'ANDREA | Trusstech SA Pty Ltd 16 High St., Dry Creek, SA 5094 | Job No: TT09727 |
| Site: 541 ANZAC HWY GLENELG EAST SA 5045 AUS | | Weight: 42.10 kg |
| Ref: DWELLING 1 | Joist Name: FT6 Type: SJ 400 Joists: FT11 | Total Weight: 42.10 kg |
| | | Laminations: 1 |



TIMBER / PLATES

| Member | Size | Plating | Restraint |
|---------|--------------------|---------|-----------|
| BC1 | 90x35-MGP10 H0 ADS | JD5 | 600 |
| LBlock1 | 90x35-MGP10 H0 ADS | JD5 | |
| LEW1 | 90x35-MGP10 H0 ADS | JD5 | |
| TC1 | 90x35-MGP10 H0 ADS | JD5 | 300 |
| W1 | 90x35-MGP10 H0 ADS | JD5 | |
| W2 | 90x35-MGP10 H0 ADS | JD5 | |
| W3 | 90x35-MGP10 H0 ADS | JD5 | |
| W4 | 90x35-MGP10 H0 ADS | JD5 | |
| TC2 | 90x35-MGP10 H0 ADS | JD5 | 300 |
| W5 | 90x35-MGP10 H0 ADS | JD5 | |
| W6 | 90x35-MGP10 H0 ADS | JD5 | |
| W7 | 90x35-MGP10 H0 ADS | JD5 | |
| W8 | 90x35-MGP10 H0 ADS | JD5 | |


- 15 more members were not shown -

Vertical Reactions at Supports

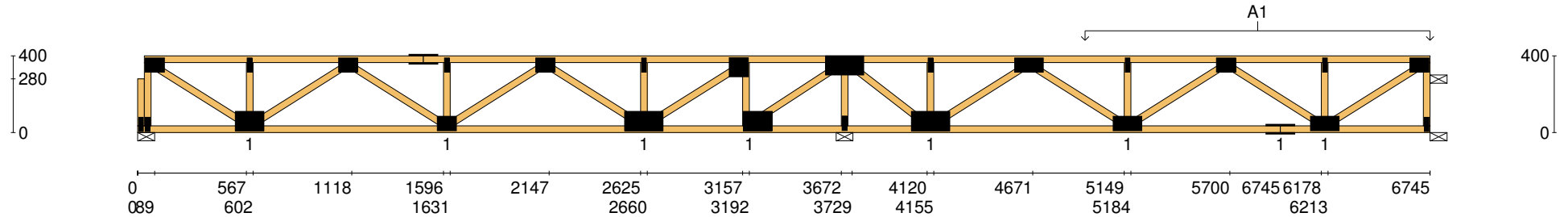
| | S1 | S2 | S3 |
|--------------------|------|------|------|
| 1.35DL (kN) | 0.48 | 1.47 | 0.55 |
| 1.2DL + 1.5LL (kN) | 2.39 | 6.88 | 1.96 |

| Joint | Nail Plate | Joint | Nail Plate |
|-------|------------|-------|------------|
| BL1-1 | 25x75-MN | B4 | 100x150-MN |
| T1 | 75x100-MN | T9 | 100x200-MN |
| BL1 | 25x75-MN | B5 | 25x75-MN |
| B1 | 100x150-MN | B6 | 100x200-MN |
| T2 | 25x75-MN | T10 | 25x75-MN |
| T3 | 75x100-MN | T11 | 75x150-MN |
| T4 | 75x150-MN | B7 | 75x150-MN |
| B2 | 75x100-MN | T12 | 25x75-MN |
| T5 | 25x75-MN | T13 | 75x100-MN |
| T6 | 75x100-MN | B8 | 75x150-MN |
| B3 | 100x200-MN | B9 | 75x150-MN |
| T7 | 25x75-MN | T14 | 25x75-MN |
| T8 | 100x100-MN | T15 | 75x100-MN |


- 1 more nail plate was not shown -

| | | | | |
|----------------------|---|-----------------------------------|--|---|
| Span: 6745 | Floor Material: Particle (15.4 kg/m²) | Application: General Areas | All dimensions in millimetres. This drawing should be read in conjunction with Multinail Technical sheets. Wall plates must be placed at supports only. | Marc Houldsworth (TN-016-020) |
| Overhang: 0/0 | Floor Covering: Std Carpet + Underlay (8 kg/m²) | Live Load: 1.5 kPa | | Ver: Floor 1.9.3 |
| Spacing: 600 | Ceiling Material: Plaster 10mm Supa Span (8.2 kg/m²) | Point Load: 1.8 kN |  | Date: 28/05/2018 |
| Quantity: 1 | Ceiling Fixing: Metal direct @ 600c | Design: AS 1720.1-2010 | | Page: 9 of 18 |

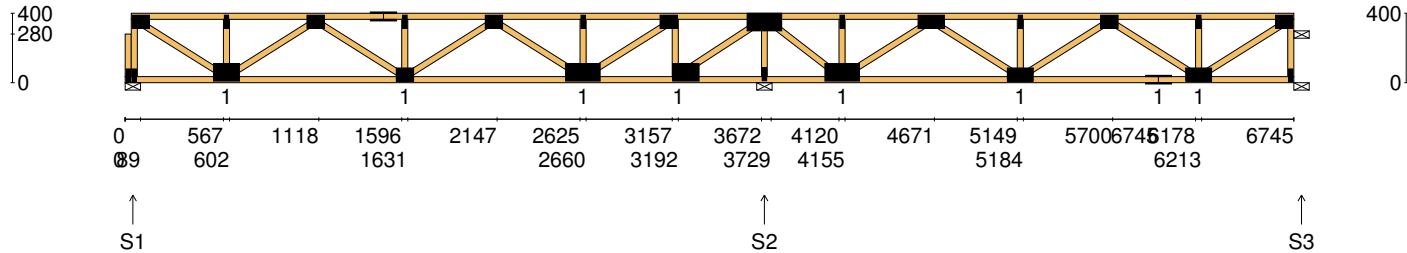
| | | |
|---|--|-------------------------------|
| Client: D'ANDREA | Trusstech SA Pty Ltd 16 High St., Dry Creek, SA 5094 | Job No: TT09727 |
| Site: 541 ANZAC HWY GLENELG EAST SA 5045 AUS | | Weight: 42.10 kg |
| Ref: DWELLING 1 | Joist Name: FT6 Type: SJ 400 Joists: FT11 | Total Weight: 42.10 kg |
| | | Laminations: 1 |



| | |
|-----------------------|-------------------------------|
| User Def. Load | A1 43.50 kg/m ² |
| Applied Load | |
| DL (kN) | |
| LL (kN) | |
| WL Up (kN) | |
| WL Dn (kN) | |

| | | | | |
|----------------------|--|-----------------------------------|--|---|
| Span: 6745 | Floor Material: Particle (15.4 kg/m²) | Application: General Areas | All dimensions in millimetres. This drawing should be read in conjunction with Multinail Technical sheets. Wall plates must be placed at supports only. | Marc Houldsworth (TN-016-020) |
| Overhang: 0/0 | Floor Covering: Std Carpet + Underlay (8 kg/m²) | Live Load: 1.5 kPa | | Ver: Floor 1.9.3 |
| Spacing: 600 | Ceiling Material: Plaster 10mm Supa Span (8.2 kg/m²) | Point Load: 1.8 kN |  | Date: 28/05/2018 |
| Quantity: 1 | Ceiling Fixing: Metal direct @ 600c | Design: AS 1720.1-2010 | | Page: 10 of 18 |

| | | |
|---|--|-------------------------------|
| Client: D'ANDREA | Trusstech SA Pty Ltd 16 High St., Dry Creek, SA 5094 | Job No: TT09727 |
| Site: 541 ANZAC HWY GLENELG EAST SA 5045 AUS | | Weight: 42.07 kg |
| Ref: DWELLING 1 | Joist Name: FT7 Type: SJ 400 Joists: FT12 | Total Weight: 42.07 kg |
| | | Laminations: 1 |



TIMBER / PLATES

| Member | Size | Plating | Restraint |
|---------|--------------------|---------|-----------|
| BC1 | 90x35-MGP10 H0 ADS | JD5 | 600 |
| LBlock1 | 90x35-MGP10 H0 ADS | JD5 | |
| LEW1 | 90x35-MGP10 H0 ADS | JD5 | |
| TC1 | 90x35-MGP10 H0 ADS | JD5 | 300 |
| W1 | 90x35-MGP10 H0 ADS | JD5 | |
| W2 | 90x35-MGP10 H0 ADS | JD5 | |
| W3 | 90x35-MGP10 H0 ADS | JD5 | |
| W4 | 90x35-MGP10 H0 ADS | JD5 | |
| TC2 | 90x35-MGP10 H0 ADS | JD5 | 300 |
| W5 | 90x35-MGP10 H0 ADS | JD5 | |
| W6 | 90x35-MGP10 H0 ADS | JD5 | |
| W7 | 90x35-MGP10 H0 ADS | JD5 | |
| W8 | 90x35-MGP10 H0 ADS | JD5 | |


- 15 more members were not shown -

Vertical Reactions at Supports

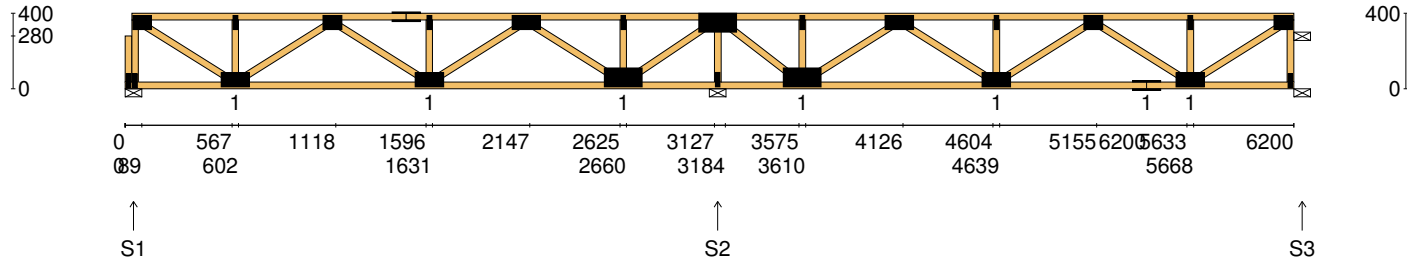
| | S1 | S2 | S3 |
|--------------------|------|------|------|
| 1.35DL (kN) | 0.49 | 1.36 | 0.36 |
| 1.2DL + 1.5LL (kN) | 2.41 | 6.78 | 1.79 |

| Joint | Nail Plate | Joint | Nail Plate |
|-------|------------|-------|------------|
| BL1-1 | 25x75-MN | B4 | 100x150-MN |
| T1 | 75x100-MN | T9 | 100x200-MN |
| BL1 | 25x75-MN | B5 | 25x75-MN |
| B1 | 100x150-MN | B6 | 100x200-MN |
| T2 | 25x75-MN | T10 | 25x75-MN |
| T3 | 75x100-MN | T11 | 75x150-MN |
| T4 | 75x150-MN | B7 | 75x150-MN |
| B2 | 75x100-MN | T12 | 25x75-MN |
| T5 | 25x75-MN | T13 | 75x100-MN |
| T6 | 75x100-MN | B8 | 75x150-MN |
| B3 | 100x200-MN | B9 | 75x150-MN |
| T7 | 25x75-MN | T14 | 25x75-MN |
| T8 | 75x100-MN | T15 | 75x100-MN |

- 1 more nail plate was not shown -

| | | | | |
|----------------------|--|-----------------------------------|--|---|
| Span: 6745 | Floor Material: Particle (15.4 kg/m²) | Application: General Areas | All dimensions in millimetres. This drawing should be read in conjunction with Multinail Technical sheets. Wall plates must be placed at supports only. | Marc Houldsworth (TN-016-020) |
| Overhang: 0/0 | Floor Covering: Std Carpet + Underlay (8 kg/m²) | Live Load: 1.5 kPa | | Ver: Floor 1.9.3 |
| Spacing: 600 | Ceiling Material: Plaster 10mm Supa Span (8.2 kg/m²) | Point Load: 1.8 kN |  | Date: 28/05/2018 |
| Quantity: 1 | Ceiling Fixing: Metal direct @ 600c | Design: AS 1720.1-2010 | | Page: 11 of 18 |

| | | |
|---|--|-------------------------------|
| Client: D'ANDREA | Trusstech SA Pty Ltd 16 High St., Dry Creek, SA 5094 | Job No: TT09727 |
| Site: 541 ANZAC HWY GLENELG EAST SA 5045 AUS | | Weight: 38.59 kg |
| Ref: DWELLING 1 | Joist Name: FT8 Type: SJ 400 Joists: FT13 | Total Weight: 38.59 kg |
| | | Laminations: 1 |



TIMBER / PLATES


| Member | Size | Plating | Restraint |
|---------|--------------------|---------|-----------|
| BC1 | 90x35-MGP10 H0 ADS | JD5 | 600 |
| LBlock1 | 90x35-MGP10 H0 ADS | JD5 | |
| LEW1 | 90x35-MGP10 H0 ADS | JD5 | |
| TC1 | 90x35-MGP10 H0 ADS | JD5 | 300 |
| W1 | 90x35-MGP10 H0 ADS | JD5 | |
| W2 | 90x35-MGP10 H0 ADS | JD5 | |
| W3 | 90x35-MGP10 H0 ADS | JD5 | |
| W4 | 90x35-MGP10 H0 ADS | JD5 | |
| TC2 | 90x35-MGP10 H0 ADS | JD5 | 300 |
| W5 | 90x35-MGP10 H0 ADS | JD5 | |
| W6 | 90x35-MGP10 H0 ADS | JD5 | |
| W7 | 90x35-MGP10 H0 ADS | JD5 | |
| W8 | 90x35-MGP10 H0 ADS | JD5 | |

- 13 more members were not shown -

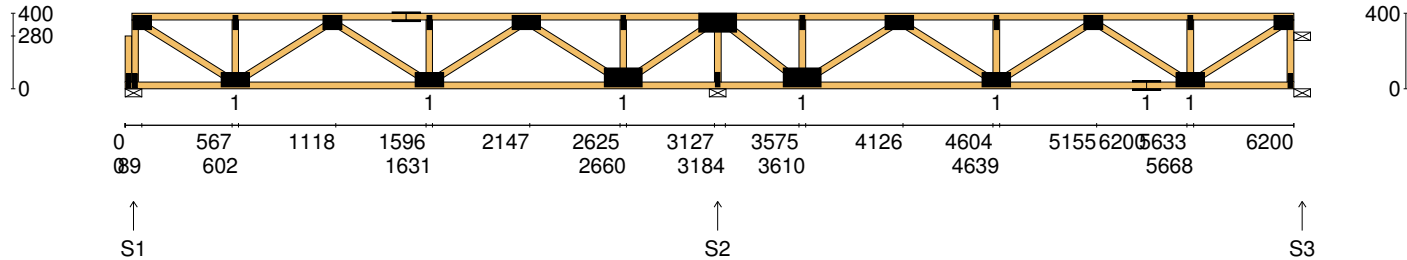
Vertical Reactions at Supports

| | S1 | S2 | S3 |
|--------------------|------|------|------|
| 1.35DL (kN) | 0.41 | 1.24 | 0.39 |
| 1.2DL + 1.5LL (kN) | 1.98 | 6.18 | 1.92 |

| Joint | Nail Plate | Joint | Nail Plate |
|-------|------------|-------|------------|
| BL1-1 | 25x75-MN | B4 | 25x75-MN |
| T1 | 75x100-MN | B5 | 100x200-MN |
| BL1 | 25x75-MN | T9 | 25x75-MN |
| B1 | 75x150-MN | T10 | 75x150-MN |
| T2 | 25x75-MN | B6 | 75x150-MN |
| T3 | 75x100-MN | T11 | 25x75-MN |
| T4 | 75x150-MN | T12 | 75x100-MN |
| B2 | 75x150-MN | B7 | 75x150-MN |
| T5 | 25x75-MN | B8 | 75x150-MN |
| T6 | 75x150-MN | T13 | 25x75-MN |
| B3 | 100x200-MN | BR1 | 25x75-MN |
| T7 | 25x75-MN | T14 | 75x100-MN |
| T8 | 100x200-MN | | |

| | | | | |
|----------------------|---|-----------------------------------|--|---|
| Span: 6200 | Floor Material: Particle (15.4 kg/m²) | Application: General Areas | All dimensions in millimetres. This drawing should be read in conjunction with Multinail Technical sheets. Wall plates must be placed at supports only. | Marc Houldsworth (TN-016-020) |
| Overhang: 0/0 | Floor Covering: Std Carpet + Underlay (8 kg/m²) | Live Load: 1.5 kPa | | Ver: Floor 1.9.3 |
| Spacing: 600 | Ceiling Material: Plaster 10mm Supa Span (8.2 kg/m²) | Point Load: 1.8 kN |  | Date: 28/05/2018 |
| Quantity: 1 | Ceiling Fixing: Metal direct @ 600c | Design: AS 1720.1-2010 | | Page: 12 of 18 |

| | | |
|---|--|-------------------------------|
| Client: D'ANDREA | Trusstech SA Pty Ltd 16 High St., Dry Creek, SA 5094 | Job No: TT09727 |
| Site: 541 ANZAC HWY GLENELG EAST SA 5045 AUS | | Weight: 38.59 kg |
| Ref: DWELLING 1 | Joist Name: FT9 Type: SJ 400 Joists: FT14, FT15 | Total Weight: 77.17 kg |
| | | Laminations: 1 |



TIMBER / PLATES


| Member | Size | Plating | Restraint |
|---------|--------------------|---------|-----------|
| BC1 | 90x35-MGP10 H0 ADS | JD5 | 600 |
| LBlock1 | 90x35-MGP10 H0 ADS | JD5 | |
| LEW1 | 90x35-MGP10 H0 ADS | JD5 | |
| TC1 | 90x35-MGP10 H0 ADS | JD5 | 300 |
| W1 | 90x35-MGP10 H0 ADS | JD5 | |
| W2 | 90x35-MGP10 H0 ADS | JD5 | |
| W3 | 90x35-MGP10 H0 ADS | JD5 | |
| W4 | 90x35-MGP10 H0 ADS | JD5 | |
| TC2 | 90x35-MGP10 H0 ADS | JD5 | 300 |
| W5 | 90x35-MGP10 H0 ADS | JD5 | |
| W6 | 90x35-MGP10 H0 ADS | JD5 | |
| W7 | 90x35-MGP10 H0 ADS | JD5 | |
| W8 | 90x35-MGP10 H0 ADS | JD5 | |

- 13 more members were not shown -

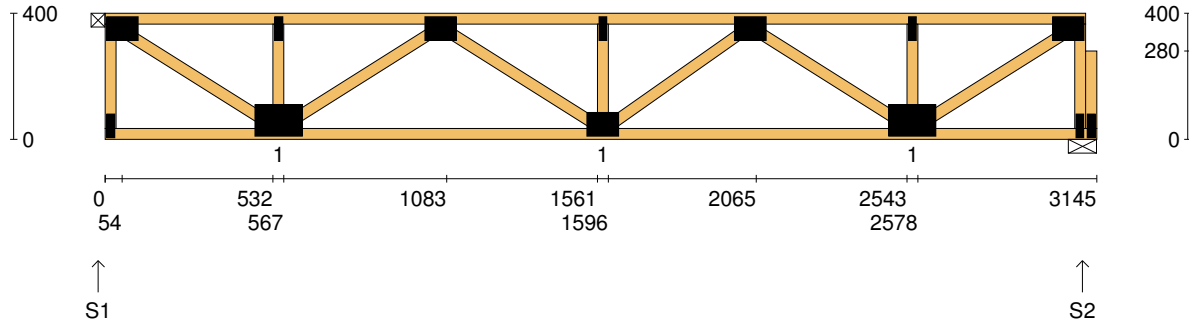
Vertical Reactions at Supports

| | S1 | S2 | S3 |
|--------------------|------|------|------|
| 1.35DL (kN) | 0.41 | 1.24 | 0.39 |
| 1.2DL + 1.5LL (kN) | 1.98 | 6.18 | 1.92 |

| Joint | Nail Plate | Joint | Nail Plate |
|-------|------------|-------|------------|
| BL1-1 | 25x75-MN | B4 | 25x75-MN |
| T1 | 75x100-MN | B5 | 100x200-MN |
| BL1 | 25x75-MN | T9 | 25x75-MN |
| B1 | 75x150-MN | T10 | 75x150-MN |
| T2 | 25x75-MN | B6 | 75x150-MN |
| T3 | 75x100-MN | T11 | 25x75-MN |
| T4 | 75x150-MN | T12 | 75x100-MN |
| B2 | 75x150-MN | B7 | 75x150-MN |
| T5 | 25x75-MN | B8 | 75x150-MN |
| T6 | 75x150-MN | T13 | 25x75-MN |
| B3 | 100x200-MN | BR1 | 25x75-MN |
| T7 | 25x75-MN | T14 | 75x100-MN |
| T8 | 100x200-MN | | |

| | | | | |
|----------------------|---|-----------------------------------|--|---|
| Span: 6200 | Floor Material: Particle (15.4 kg/m²) | Application: General Areas | All dimensions in millimetres. This drawing should be read in conjunction with Multinail Technical sheets. Wall plates must be placed at supports only. | Marc Houldsworth (TN-016-020) |
| Overhang: 0/0 | Floor Covering: Std Carpet + Underlay (8 kg/m²) | Live Load: 1.5 kPa | | Ver: Floor 1.9.3 |
| Spacing: 600 | Ceiling Material: Plaster 10mm Supa Span (8.2 kg/m²) | Point Load: 1.8 kN |  | Date: 28/05/2018 |
| Quantity: 2 | Ceiling Fixing: Metal direct @ 600c | Design: AS 1720.1-2010 | | Page: 13 of 18 |

| | | |
|---|---|---|
| Client: D'ANDREA | Trusstech SA Pty Ltd 16 High St., Dry Creek, SA 5094 Joist Name: FT10 Type: SJ 400 Joists: FT22, FT23, FT24, FT25, FT26, FT30 | Job No: TT09727 |
| Site: 541 ANZAC HWY GLENELG EAST SA 5045 AUS | | Weight: 19.54 kg |
| Ref: DWELLING 1 | | Total Weight: 117.22 kg Laminations: 1 |



TIMBER / PLATES

| Member | Size | Plating | Restraint |
|--------|--------------------|---------|-----------|
| BC1 | 90x35-MGP10 H0 ADS | JD5 | 600 |
| LEW1 | 90x35-MGP10 H0 ADS | JD5 | |
| TC1 | 90x35-MGP10 H0 ADS | JD5 | 300 |
| W1 | 90x35-MGP10 H0 ADS | JD5 | |
| W2 | 90x35-MGP10 H0 ADS | JD5 | |
| W3 | 90x35-MGP10 H0 ADS | JD5 | |
| W4 | 90x35-MGP10 H0 ADS | JD5 | |
| W5 | 90x35-MGP10 H0 ADS | JD5 | |
| W6 | 90x35-MGP10 H0 ADS | JD5 | |
| W7 | 90x35-MGP10 H0 ADS | JD5 | |
| W8 | 90x35-MGP10 H0 ADS | JD5 | |
| W9 | 90x35-MGP10 H0 ADS | JD5 | |
| REW1 | 90x35-MGP10 H0 ADS | JD5 | |


- 1 more member was not shown -

Vertical Reactions at Supports

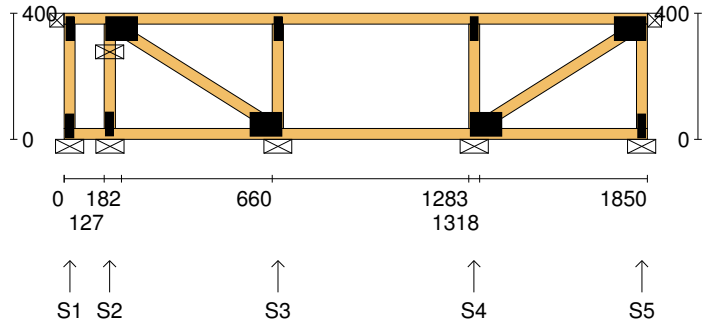
| | S1 | S2 |
|--------------------|------|------|
| 1.35DL (kN) | 0.51 | 0.52 |
| 1.2DL + 1.5LL (kN) | 2.53 | 2.53 |

Joint Nail Plate

| | |
|-------|------------|
| T1 | 75x100-MN |
| BL1 | 25x75-MN |
| B1 | 100x150-MN |
| T2 | 25x75-MN |
| T3 | 75x100-MN |
| B2 | 75x100-MN |
| T4 | 25x75-MN |
| T5 | 75x100-MN |
| B3 | 100x150-MN |
| T6 | 25x75-MN |
| BR1 | 25x75-MN |
| T7 | 75x100-MN |
| BR1-1 | 25x75-MN |

| | | | | | |
|----------------------|---|-----------------------------------|--|---|--|
| Span: 3145 | Floor Material: Particle (15.4 kg/m²) | Application: General Areas | All dimensions in millimetres. This drawing should be read in conjunction with Multinail Technical sheets. Wall plates must be placed at supports only. | Marc Houldsworth (TN-016-020) | |
| Overhang: 0/0 | Floor Covering: Std Carpet + Underlay (8 kg/m²) | Live Load: 1.5 kPa | | Ver: Floor 1.9.3 | |
| Spacing: 600 | Ceiling Material: Plaster 10mm Supa Span (8.2 kg/m²) | Point Load: 1.8 kN |  | Date: 28/05/2018 | |
| Quantity: 6 | Ceiling Fixing: Metal direct @ 600c | Design: AS 1720.1-2010 | | Page: 14 of 18 | |

| | | |
|---|--|--|
| Client: D'ANDREA | Trusstech SA Pty Ltd 16 High St., Dry Creek, SA 5094 Joist Name: FT11 Type: SJ 400 Ladder Joists: FT29 | Job No: TT09727 |
| Site: 541 ANZAC HWY GLENELG EAST SA 5045 AUS | | Weight: 11.00 kg |
| Ref: DWELLING 1 | | Total Weight: 11.00 kg Laminations: 1 |



TIMBER / PLATES


| Member | Size | Plating | Restraint |
|--------|--------------------|---------|-----------|
| BC1 | 90x35-MGP10 H0 ADS | JD5 | 600 |
| LEW1 | 90x35-MGP10 H0 ADS | JD5 | |
| TC1 | 90x35-MGP10 H0 ADS | JD5 | 300 |
| W1 | 90x35-MGP10 H0 ADS | JD5 | |
| W2 | 90x35-MGP10 H0 ADS | JD5 | |
| W3 | 90x35-MGP10 H0 ADS | JD5 | |
| W4 | 90x35-MGP10 H0 ADS | JD5 | |
| W5 | 90x35-MGP10 H0 ADS | JD5 | |
| REW1 | 90x35-MGP10 H0 ADS | JD5 | |

Vertical Reactions at Supports

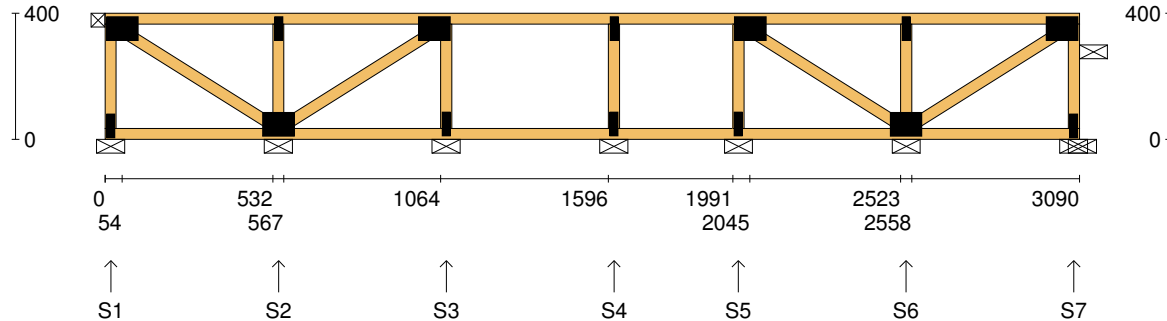
| | S1 | S2 | S3 | S4 | S5 |
|---------------------------|-------|------|------|------|------|
| 1.35DL (kN) | -0.01 | 0.14 | 0.19 | 0.21 | 0.07 |
| 1.2DL + 1.5LL (kN) | -0.10 | 0.68 | 1.01 | 1.10 | 0.30 |

Joint Nail Plate

| | |
|-----|-----------|
| TL1 | 25x75-MN |
| BL2 | 25x75-MN |
| T1 | 75x100-MN |
| B1 | 25x75-MN |
| B2 | 75x100-MN |
| T2 | 25x75-MN |
| B3 | 75x100-MN |
| T3 | 25x75-MN |
| BR1 | 25x75-MN |
| T4 | 75x100-MN |

| | | | | | |
|----------------------|---|-----------------------------------|--|---|--|
| Span: 1850 | Floor Material: Particle (15.4 kg/m²) | Application: General Areas | All dimensions in millimetres. This drawing should be read in conjunction with Multinail Technical sheets. Wall plates must be placed at supports only. | Marc Houldsworth (TN-016-020) | |
| Overhang: 0/0 | Floor Covering: Std Carpet + Underlay (8 kg/m²) | Live Load: 1.5 kPa | | Ver: Floor 1.9.3 | |
| Spacing: 600 | Ceiling Material: Plaster 10mm Supa Span (8.2 kg/m²) | Point Load: 1.8 kN |  | Date: 28/05/2018 | |
| Quantity: 1 | Ceiling Fixing: Metal direct @ 600c | Design: AS 1720.1-2010 | | Page: 15 of 18 | |

| | | |
|---|--|-------------------------------|
| Client: D'ANDREA | Trusstech SA Pty Ltd 16 High St., Dry Creek, SA 5094 | Job No: TT09727 |
| Site: 541 ANZAC HWY GLENELG EAST SA 5045 AUS | | Weight: 18.04 kg |
| Ref: DWELLING 1 | Joist Name: FT12 Type: SJ 400 Ladder Joists: FT31 | Total Weight: 18.04 kg |
| | | Laminations: 1 |




TIMBER / PLATES

| Member | Size | Plating | Restraint |
|--------|--------------------|---------|-----------|
| BC1 | 90x35-MGP10 H0 ADS | JD5 | 600 |
| LEW1 | 90x35-MGP10 H0 ADS | JD5 | |
| TC1 | 90x35-MGP10 H0 ADS | JD5 | 300 |
| W1 | 90x35-MGP10 H0 ADS | JD5 | |
| W2 | 90x35-MGP10 H0 ADS | JD5 | |
| W3 | 90x35-MGP10 H0 ADS | JD5 | |
| W4 | 90x35-MGP10 H0 ADS | JD5 | |
| W5 | 90x35-MGP10 H0 ADS | JD5 | |
| W6 | 90x35-MGP10 H0 ADS | JD5 | |
| W7 | 90x35-MGP10 H0 ADS | JD5 | |
| W8 | 90x35-MGP10 H0 ADS | JD5 | |
| W9 | 90x35-MGP10 H0 ADS | JD5 | |
| REW1 | 90x35-MGP10 H0 ADS | JD5 | |

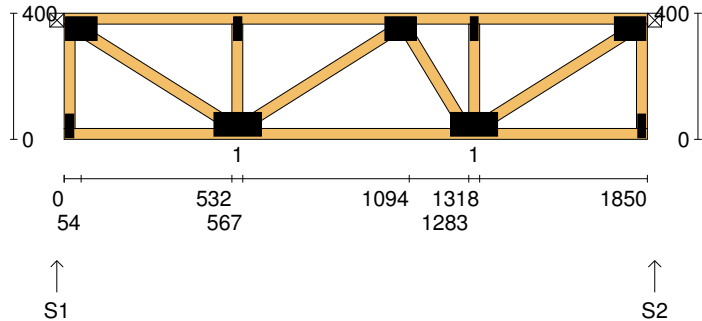
Vertical Reactions at Supports

| | S1 | S2 | S3 | S4 | S5 | S6 | S7 |
|--------------------|------|------|------|------|------|------|------|
| 1.35DL (kN) | 0.07 | 0.22 | 0.16 | 0.14 | 0.13 | 0.22 | 0.07 |
| 1.2DL + 1.5LL (kN) | 0.30 | 1.11 | 0.79 | 0.75 | 0.63 | 1.13 | 0.31 |

| Joint | Nail Plate | Joint | Nail Plate |
|-------|------------|-------|------------|
| T1 | 75x100-MN | T7 | 75x100-MN |
| BL1 | 25x75-MN | | |
| B1 | 75x100-MN | | |
| T2 | 25x75-MN | | |
| T3 | 75x100-MN | | |
| B2 | 25x75-MN | | |
| T4 | 25x75-MN | | |
| B3 | 25x75-MN | | |
| T5 | 75x100-MN | | |
| B4 | 25x75-MN | | |
| B5 | 75x100-MN | | |
| T6 | 25x75-MN | | |
| BR1 | 25x75-MN | | |

| | | | | |
|----------------------|---|-----------------------------------|--|---|
| Span: 3090 | Floor Material: Particle (15.4 kg/m²) | Application: General Areas | All dimensions in millimetres. This drawing should be read in conjunction with Multinail Technical sheets. Wall plates must be placed at supports only. | Marc Houldsworth (TN-016-020) |
| Overhang: 0/0 | Floor Covering: Std Carpet + Underlay (8 kg/m²) | Live Load: 1.5 kPa | | Ver: Floor 1.9.3 |
| Spacing: 600 | Ceiling Material: Plaster 10mm Supa Span (8.2 kg/m²) | Point Load: 1.8 kN |  | Date: 28/05/2018 |
| Quantity: 1 | Ceiling Fixing: Metal direct @ 600c | Design: AS 1720.1-2010 | | Page: 16 of 18 |

| | | |
|---|--|--|
| Client: D'ANDREA | Trusstech SA Pty Ltd 16 High St., Dry Creek, SA 5094 Joist Name: FT13 Type: SJ 400 Joists: FT33, FT34, FT35 | Job No: TT09727 |
| Site: 541 ANZAC HWY GLENELG EAST SA 5045 AUS | | Weight: 12.11 kg |
| Ref: DWELLING 1 | | Total Weight: 36.32 kg Laminations: 1 |



TIMBER / PLATES


| Member | Size | Plating | Restraint |
|--------|--------------------|---------|-----------|
| BC1 | 90x35-MGP10 H0 ADS | JD5 | 600 |
| LEW1 | 90x35-MGP10 H0 ADS | JD5 | |
| TC1 | 90x35-MGP10 H0 ADS | JD5 | 300 |
| W1 | 90x35-MGP10 H0 ADS | JD5 | |
| W2 | 90x35-MGP10 H0 ADS | JD5 | |
| W3 | 90x35-MGP10 H0 ADS | JD5 | |
| W4 | 90x35-MGP10 H0 ADS | JD5 | |
| W5 | 90x35-MGP10 H0 ADS | JD5 | |
| W6 | 90x35-MGP10 H0 ADS | JD5 | |
| REW1 | 90x35-MGP10 H0 ADS | JD5 | |

Vertical Reactions at Supports

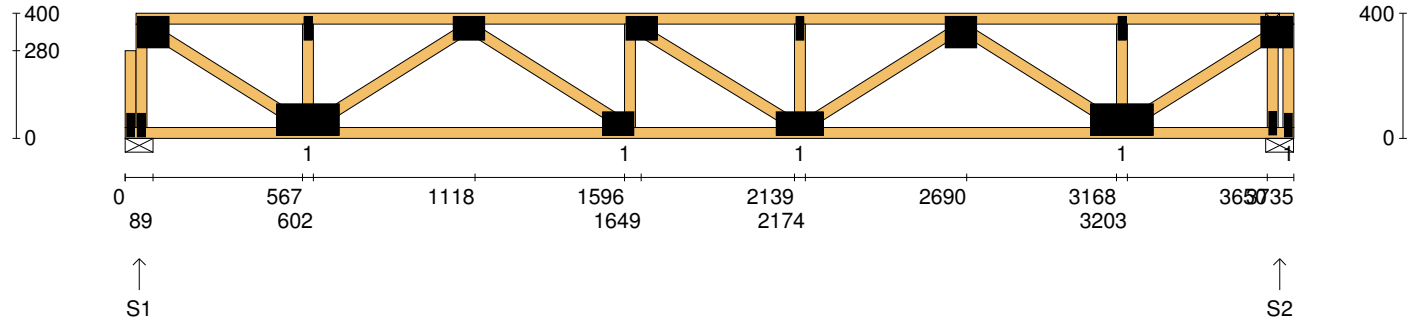
| | S1 | S2 |
|--------------------|------|------|
| 1.35DL (kN) | 0.31 | 0.31 |
| 1.2DL + 1.5LL (kN) | 1.50 | 1.50 |

Joint Nail Plate

| | |
|-----|-----------|
| T1 | 75x100-MN |
| BL1 | 25x75-MN |
| B1 | 75x150-MN |
| T2 | 25x75-MN |
| T3 | 75x100-MN |
| B2 | 75x150-MN |
| T4 | 25x75-MN |
| BR1 | 25x75-MN |
| T5 | 75x100-MN |

| | | | | | |
|----------------------|---|-----------------------------------|--|---|--|
| Span: 1850 | Floor Material: Particle (15.4 kg/m²) | Application: General Areas | All dimensions in millimetres. This drawing should be read in conjunction with Multinail Technical sheets. Wall plates must be placed at supports only. | Marc Houldsworth (TN-016-020) | |
| Overhang: 0/0 | Floor Covering: Std Carpet + Underlay (8 kg/m²) | Live Load: 1.5 kPa | | Ver: Floor 1.9.3 | |
| Spacing: 600 | Ceiling Material: Plaster 10mm Supa Span (8.2 kg/m²) | Point Load: 1.8 kN |  | Date: 28/05/2018 | |
| Quantity: 3 | Ceiling Fixing: Metal direct @ 600c | Design: AS 1720.1-2010 | | Page: 17 of 18 | |

| | | |
|---|--|-------------------------------|
| Client: D'ANDREA | Trusstech SA Pty Ltd 16 High St., Dry Creek, SA 5094 | Job No: TT09727 |
| Site: 541 ANZAC HWY GLENELG EAST SA 5045 AUS | | Weight: 24.08 kg |
| Ref: DWELLING 1 | Joist Name: FT14 Type: SJ 400 Joists: FT37 | Total Weight: 24.08 kg |
| | | Laminations: 1 |



TIMBER / PLATES


| Member | Size | Plating | Restraint |
|---------|--------------------|---------|-----------|
| BC1 | 90x35-MGP10 H0 ADS | JD5 | 600 |
| LBlock1 | 90x35-MGP10 H0 ADS | JD5 | |
| LEW1 | 90x35-MGP10 H0 ADS | JD5 | |
| TC1 | 90x35-MGP10 H0 ADS | JD5 | 300 |
| W1 | 90x35-MGP10 H0 ADS | JD5 | |
| W2 | 90x35-MGP10 H0 ADS | JD5 | |
| W3 | 90x35-MGP10 H0 ADS | JD5 | |
| W4 | 90x35-MGP10 H0 ADS | JD5 | |
| W5 | 90x35-MGP10 H0 ADS | JD5 | |
| W6 | 90x35-MGP10 H0 ADS | JD5 | |
| W7 | 90x35-MGP10 H0 ADS | JD5 | |
| W8 | 90x35-MGP10 H0 ADS | JD5 | |
| W9 | 90x35-MGP10 H0 ADS | JD5 | |

- 4 more members were not shown -

Vertical Reactions at Supports

| | S1 | S2 |
|--------------------|------|------|
| 1.35DL (kN) | 0.60 | 0.62 |
| 1.2DL + 1.5LL (kN) | 2.98 | 3.06 |

| Joint | Nail Plate | Joint | Nail Plate |
|-------|------------|-------|------------|
| BL1-1 | 25x75-MN | T8 | 25x75-MN |
| T1 | 100x100-MN | B5 | 25x75-MN |
| BL1 | 25x75-MN | BR1 | 25x75-MN |
| B1 | 100x200-MN | T9 | 100x100-MN |
| T2 | 25x75-MN | | |
| T3 | 75x100-MN | | |
| B2 | 75x100-MN | | |
| T4 | 75x100-MN | | |
| B3 | 75x150-MN | | |
| T5 | 25x75-MN | | |
| T6 | 100x100-MN | | |
| B4 | 100x200-MN | | |
| T7 | 25x75-MN | | |

| | | | | | |
|----------------------|---|-----------------------------------|--|---|--------------------|
| Span: 3735 | Floor Material: Particle (15.4 kg/m²) | Application: General Areas | All dimensions in millimetres. This drawing should be read in conjunction with Multinail Technical sheets. Wall plates must be placed at supports only. | Marc Houldsworth (TN-016-020) | |
| Overhang: 0/0 | Floor Covering: Std Carpet + Underlay (8 kg/m²) | Live Load: 1.5 kPa | | Ver: | Floor 1.9.3 |
| Spacing: 600 | Ceiling Material: Plaster 10mm Supa Span (8.2 kg/m²) | Point Load: 1.8 kN |  | Date: | 28/05/2018 |
| Quantity: 1 | Ceiling Fixing: Metal direct @ 600c | Design: AS 1720.1-2010 | | Page: | 18 of 18 |